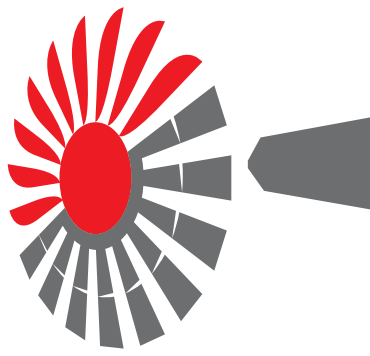
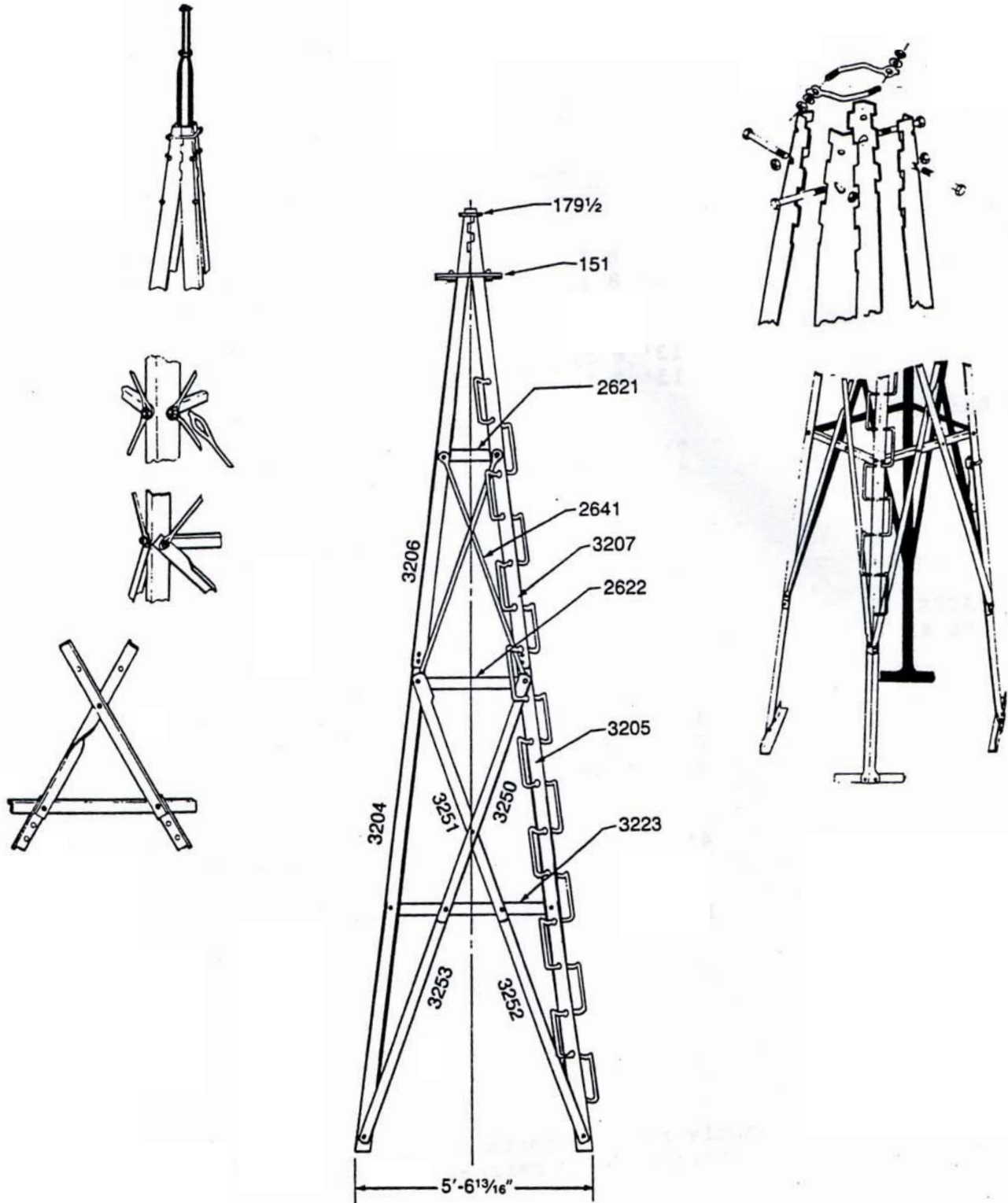


American
West Windmill
& SOLAR COMPANY™



27' Ft. 4 Post Tower for 10' Mill

Power From Above, Water From Below.™





10/27 4-Post Tower Checklist

Power From Above, Water From Below.™

Angle Iron
Corner Post Measurements
2 1/2" x 2 1/2" x 3/16"

27' 4-Post Tower for 10' Mill

	Length	Quantity-Part
TOP CORNER POSTS:		1-Bundle #265
Plain	13' 8 1/2"	(3) W-3206
Stepped	13' 8 1/2"	(1) W-3207
LOWER CORNER POSTS:		1-Bundle #288
Plain	13' 8 1/2"	(3) W-3204
Stepped	13' 8 1/2"	(1) W-3205
ANGLE BRACES:		1-Bundle #351
Top Right	7' 7 1/2"	(4) W-3250
Top Left	7' 7 1/2"	(4) W-23251
		1-Bundle #352
Bottom Right	7' 2 1/4"	(4) W-3252
Bottom Left	7' 2 1/4"	(4) W-3253
ROUND BRACES		1-Bundle #333X
Top Set #1	7' 1"	(8) W-2641
GIRTS		1-Bundle #308
Top Set #1	1' 5 1/2"	(4) W-2621
#2	2' 9 1/2"	(4) W-2622
#3	4' 1 1/4"	(4) W-3223
ANCHOR POSTS		1-Bundle #470
Upright	4' 11 7/8"	(4) W-2616 1/2
		1-Bundle #471
Crosspiece	1' 3"	(8) W-115 1/2
10' PLATFORM		1-Piece
Length x Width	30 1/8" x 30 1/8"	M-151 METAL
BOX OF BOLTS		(1) BOB 10/27