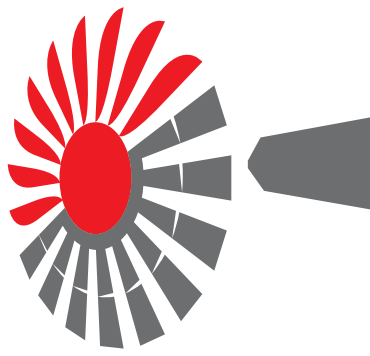
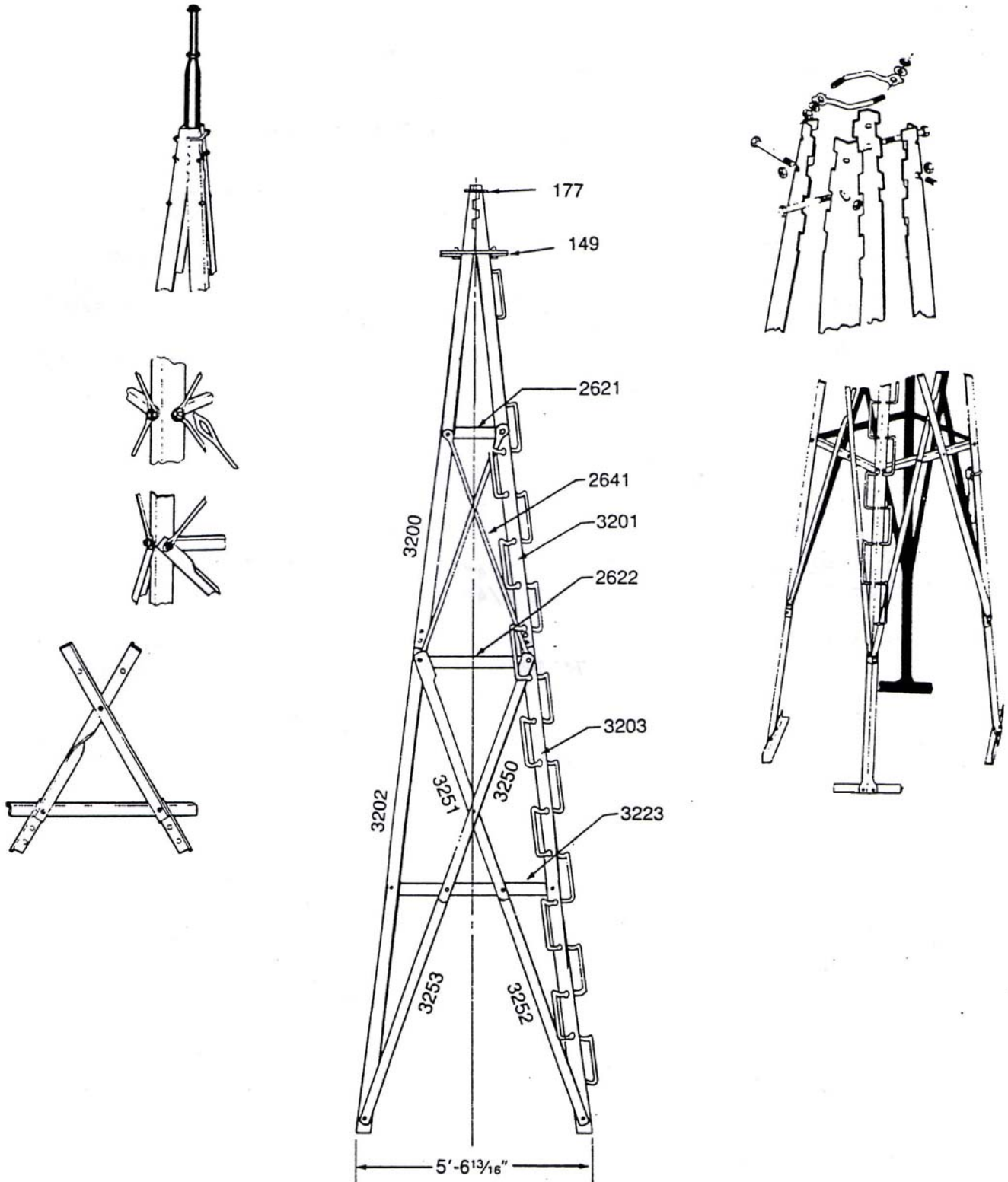


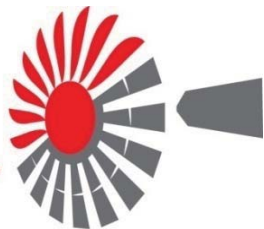
American
West Windmill
& SOLAR COMPANY™



27' Ft. 4 Post Tower for 6' or 8' Mill

Power From Above, Water From Below.™





8/27
4-Post Tower
Checklist

Power From Above, Water From Below.™

Angle Iron
Corner Post Measurements
2" x 2" x 3/16"

27' 4-Post Tower for 6' or 8' Mill

		Length	Quantity-Part
TOP CORNER POSTS:			1-Bundle #261
	Plain	13' 8 1/2"	(3) W-3200
	Stepped	13' 8 1/2"	(1) W-3201
LOWER CORNER POSTS:			1-Bundle #287
	Plain	13' 8 1/2"	(3) W-3202
	Stepped	13' 8 1/2"	(1) W-3203
ANGLE BRACES:			1-Bundle #351
	Top Right	7' 7 1/2"	(4) W-3250
	Top Left	7' 7 1/2"	(4) W-23251
			1-Bundle #352
	Bottom Right	7' 2 1/4"	(4) W-3252
	Bottom Left	7' 2 1/4"	(4) W-3253
ROUND BRACES			1-Bundle #333X
	Top Set #1	7' 1"	(8) W-2641
GIRTS			1-Bundle #308
	Top Set #1	1' 5 1/2"	(4) W-2621
	#2	2' 9 1/2"	(4) W-2622
	#3	4' 1 1/4"	(4) W-3223
ANCHOR POSTS			1-Bundle #468
	Upright	4' 11 7/8"	(4) W-2615 1/2
			1-Bundle #469
	Crosspiece	1' 3"	(8) W-115 1/4
8' PLATFORM			1-Piece
	Length x Width	27 1/4" x 28 1/8"	M-149 METAL
BOX OF BOLTS			(1) BOB 8/27